


# Driver Installation

In the Windows environment, TOOYA Fun<sup>plus</sup> can be used even if the driver is not installed, but to use all the functions of the tablet, you must install the driver software. Before installing the driver, make sure the tablet is connected to your computer.

## Windows Version

Put the CD into the CD-ROM drive, wait for the installation screen to open, or you can open [My Computer] / [CD-ROM], double-click [Setup.exe] and follow the installation steps until the installation finishes.

## Mac Version

Put the CD into the CD-ROM drive, wait for the installation screen to open, or you can manually follow [Go] / [Computer] / [CD Player] / [Pen Tablet 

### *Note:*

- 1. Please uninstall the other tablet drivers before installing the driver of this product.*
- 2. After the driver is installed, be sure to reboot the computer.*
- 3. Please go to PenPower's website (<http://www.penpower.net>) to download the software if you don't have CD-ROM drive.*

## Knowing Your Pen

The TOOYA Fun<sup>plus</sup> pen does not require a battery, and it has eraser function. Please use the usual way to hold and move the pen within 5mm height from the tablet, you will see the mouse cursor on the screen also move, the function of the pen tip is like the left button of the mouse, also has a double-click function, in addition, there are two buttons on the pen, which you can set in [Tablet Settings].

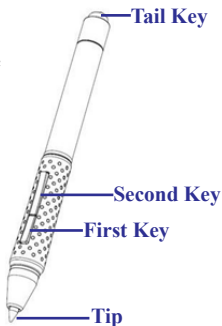
The button function of the pen is like the general three-button mouse:

Nib: Corresponds to the left mouse button.

First key: Corresponds to the right mouse button.

Second key: Corresponds to the middle mouse button or eraser switch.

Tail key: Pressure-sensitive eraser function.



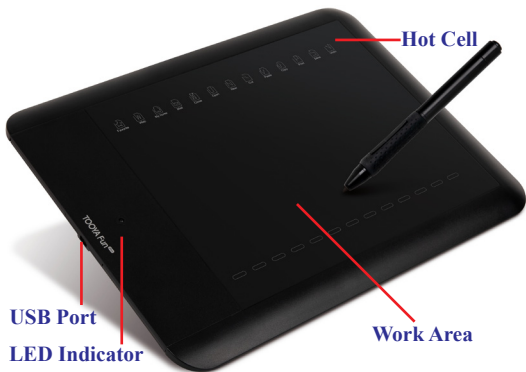
**Note:** *The pen will enter sleep mode to save power if it has not been used for a while. Tap the desktop with the tip before using to wake it up.*

The pen tip can be replaced with the new tip once the old tip become too short and hard:

1. Grasp the tip by the open end of the remove tool and pull out the tip with care.
2. Place the new tip in the pen and push it in until the end is reached. To avoid damaging the pen, don't use too much force to push the pen tip.

## Knowing Your Tablet

The names of the parts of the tablet are as shown below:




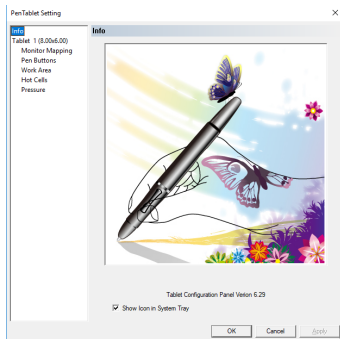
1. **USB Port:** The product equips USB cable.
2. **Work Area:** Work Area is the active area where Digital Pen responds. It is different from using normal mouse, the work area is equal with your monitor, you can directly point on the place you like to move the mouse to. If you move the pen to left bottom corner, the pointer on your display will directly go to this point. This makes work much more efficient and much quicker than using a mouse.
3. **Hot Cell:** Hot Cells are the functions that can be programmed to common uses, which include visiting a web site, opening a music file, starting a word processor and so on. You can name the hot cells that are defined by yourself. Once the hot cell has

been defined, every time you press it, the device will immediately execute your defined function.

4. LED Indicator: Right after you connect the tablet to the computer, LED Indicator will blink quickly for a short period. When the blinking stops, this indicates that Digital Tablet has started up normally and is ready to be used. When you hover the pen over the work area, LED Indicator will blink slowly, which means the tablet detects the pen.

## Tablet Configuration Panel

To open the tablet configuration panel, please click the [Table Setting] in the [Control Panel] of the computer, or click the small icon  in the lower right corner of the screen to open. On Mac system, press [Go] / [Application] / [PenTablet Setting] / [Tablet Setting].

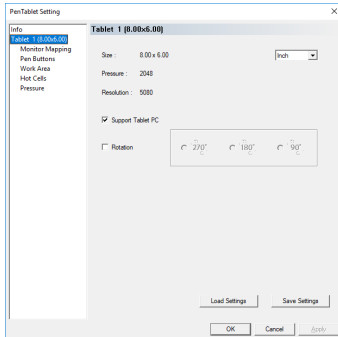


The Tablet Configuration Panel shows the size of the active area, the version of the tablet console, and all the configuration options for the tablet:

1. Tablet 1 (8.00×6.00) – displays width and height of Active Area in inches and set up for Left-handed User.

**Note:** *In the Mac version of Tablet Configuration Panel, the setting for left-handed User is at Work Area.*

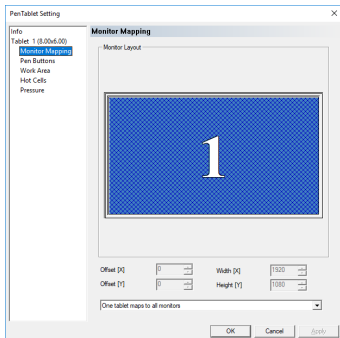
2. Monitor Mapping – tap to map Active Area to correspond with a monitor screen or two.
3. Pen keys – tap to customize the functions of pen keys.
4. Work Area – tap to adjust the size and position of work area and correspond it with screen ratio.
5. Hot Cells – tap to define the functions of hot cells.
6. Pressure – tap to customize and test the pressure sensitivity feature.



## ● Monitor Mapping

Monitor mapping option allows you to map the tablet either to both monitors or just one of them when you have two monitors.

With two monitors present, the tablet is mapped to both monitors, such that when you move Digital Pen across the entire work area, the cursor will move from one monitor to another. It is possible to move the cursor to any place on both monitor.



## ● Configuring Pen Buttons

1. Select the button you want to set in [Button Name].
2. By selecting the function corresponding to the mouse, you can set the function of the selected pen button. After setting, press this button to execute the specified mouse command.
3. Move the slider bar in Double Click Time Area toward “Slow” can allow more time for tapping the second time after the first.



# Warranty Card

**Thank you for purchasing PenPower product.**

Please register your product on [www.penpower.net/reg.html](http://www.penpower.net/reg.html) to ensure warranty service:

- **1 Year Warranty**
- **Software Updates**
- **Technical Support**

Note:

- The warranty period begins on the purchase date, standard warranty period ends 12 months after the purchase date.
- Product warranty is limited to the origin of purchase. Users might pay a service fee when requesting warranty service in different country.
- A copy of the official invoice must be submitted as proof of purchase for warranty service.



# Warranty Card

Product Name: \_\_\_\_\_

Purchase Date: \_\_\_\_\_


Dealers Signature

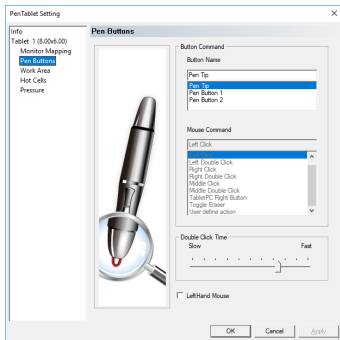
## PenPower Technology Ltd.

Global Operations: USA +1-510-897-6600 Beijing +86-10-8287-3871  
Taiwan +886-2-2778-1922 Guangzhou +86-20-8776-2205  
Hong Kong +852-2111-1548

[www.penpower.net](http://www.penpower.net)



4. If Pen Button is defined as the “Eraser Toggle”, pressing the button will toggle the functions of Pen Tip and Eraser together. The icon corresponding to Pen Tablet in the lower right of the screen would indicate the changing of eraser function . Pressing the button again will change the function back to Pen Tip.



**Note:**

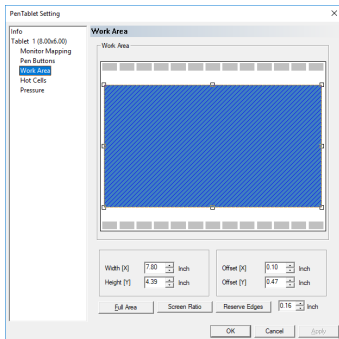
1. *Pen tip only be defined as left mouse button.*
2. *Mac version doesn't provide the setting of "Double Click Time".*
3. *When Mac users define pen button as "Eraser Toggle", it will not show the icon changing on the screen, but the eraser function can still be applied in CAD tool.*

⦿ **Adjusting Work Area**

1. After clicking on the work area, you can drag the eight small squares around it to adjust the size of the work area. To adjust the position, you can drag the work area to the location you

want.



2. If you need the largest work area, press the [Full area] button. It is recommended to use [Screen Ratio] to avoid deformation problems.
3. The [Screen Ratio] button solves the distortion problem and makes the tablet's aspect ratio the same as the computer screen.
4. The [Reserve Edges] button will be placed around the maximum work area of the tablet, leaving space for more shortcut keys, which will reduce the size of the work area.

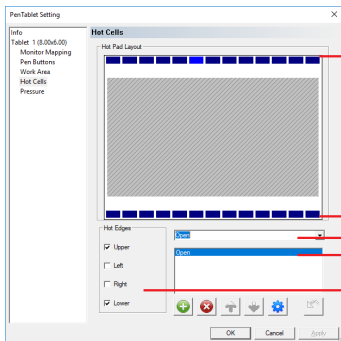


## • Configuring Hot Cells

Hot Cells are the small icons on the edges of work area. When you tap on one of these keys, the pre-defined function will be executed. You may define these functions as you wish, such as

visiting a web site, starting a word processor, playing a video clip, and so on.

1. First, select a hot cell in Hot Pad Layout Area, and then tap the  button. At this point, Hot Cell Function Panel will pop up.
2. Select [Execute] to define the program you want to execute. Press the browse button  and enter the starting directory and parameter values to execute a program. For example, to set a video file to play, first select a video player, then type the path in [Start In] and type the name of the video file you want to play in [Parameter].





Select a Cell to define




Hot Cell name

Hot Cell function

Hot Edges Area

3. Select [Internet] to specify a web site to be visited or another Internet service.

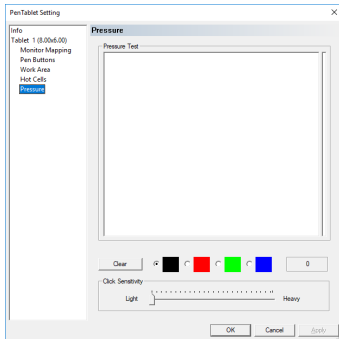
**Tip:** You can set more than one URL in the same hot cell and use the up  and down  buttons to change the order. When you click the hot cell, all URLs will automatically pop up with your order.

4. Select [Hot Key] to specify a combination of cells (Hot Cell Combination) to invoke the function. For example, [Save as new file] in Photoshop is Shift+Ctrl+s. After setting, clicking the hot cell is equivalent to pressing the composite key on the keyboard.
5. If you want to delete the function of certain Hot Cell, select it and tap .
6. To change the hot cell function, press , the system will display the previously set function.
7. Press the restore button  can restore the function settings before.

## ● **Testing and Configuring Pressure Sensitivity**

1. When you draw on the tablet, the lines in the pressure sensitivity test area will vary in thickness depending on the amount of force applied. The pressure gauge on the right reflects the magnitude of the pressure value. The higher the pressure, the higher the small icon of the pressure gauge will rise.
2. Pressing the tip of the pen on the work area of the tablet, if the applied force is not displayed relative to the pressure value or pressure gauge, it means that there is no pressure sensing function. Please reconfirm the installation of the driver.
3. Adjusting the axis close to [Light] means that you can react as long as you touch it on the small icon. You can set the weight

and sensitivity of the force according to your preference.



***Note: There is no Click Sensitivity Area in Mac version of Testing and Configuring Pressure Sensitivity Panel.***